

## Upcoming Events and Notices

**This Club Day: 2<sup>nd</sup> March**

**Next Club Day: 6<sup>th</sup> April**

### Whareora Hall 10.00am

What to bring:

- Your **Membership card** to show at the door
- **Cash** for the produce table, **produce** for the produce table
- **Library books** you have borrowed
- **Bee suit** (Club has some for members to use also)

Directions: From SH1, turn off to *Kensington*. Turn left onto *Mill Road*, then right at *Whareora Road*. Keep on this road until it joins *Pataua North Road* and continue for a few more minutes.

The hall is on the right. Please **do not** park on the road, use the paddock adjacent to the Hall when the car park is full.

Apiarist's Advocate

February Edition [Link here](#)

### Updates

Nick (our Club President) and Celia Watkins and their family are moving to the South Island soon and so we are looking for a new Club President.

We wish them all the best for their new ventures and thank them for their contribution to the club.

We look forward to hearing from club members who would like to put their name forward.



### Club Day Duty Roster

Set Up Hall From 9am	Volunteers needed
Set up in Kitchen 9am & Set up Lunch	
Wash up Kitchen from Lunch	
Pack up / Clean Hall From 12-30	

All these jobs are easy and require very little time and effort, please sign up on the roster at Club Day. A big "THANK YOU" for your help.

### FRAME CLEANING

Tai's Frame Cleaning Service

\$1.50 per frame.







For more info contact Tai Pullen

020 415 815 64

[taipullen9@gmail.com](mailto:taipullen9@gmail.com)

516 State Highway 1 Otaika  
Whangārei

# News from last Club Day

<p><b>Club Day - 3<sup>rd</sup> February 2024</b></p> <ul style="list-style-type: none"> <li>Welcome Back!</li> <li>Bulletin</li> <li>The Honey Flow</li> <li>Door Prize Draw</li> <li>Members talk</li> <li>Nic Nac's Section</li> <li>Lunch</li> <li>Hive Time</li> <li>Note: Hand out roster for names</li> </ul> <p><i>'Helping Beekeepers Keep Bees'</i></p>	<p><b>Welcome 2024</b></p> 	<p><b>Bulletin</b></p>  <p><i>'Helping Beekeepers Keep Bees'</i></p>	<p><b>Bulletin - Iain Luton Minute Silence</b></p>  <p><i>'Helping Beekeepers Keep Bees'</i></p>
1 *	2	3	4
<p><b>Bulletin</b></p> <ul style="list-style-type: none"> <li>The Harvest Declaration on the WBC Website is incorrect</li> <li>Need a new president! Who is interested?</li> <li>The NZ Beekeeper magazine will be online from April</li> </ul> <p><i>'Helping Beekeepers Keep Bees'</i></p>	<p><b>Bulletin</b></p> <ul style="list-style-type: none"> <li>Varroa reminder - It is now that the varroa numbers get very high</li> <li>Treat after honey harvest.</li> </ul> <p><i>'Helping Beekeepers Keep Bees'</i></p>	<p><b>Bulletin - Fire near hives</b></p> <ul style="list-style-type: none"> <li>Never put yourself in harm's way.</li> <li>Only try to move hives if able to do safely</li> </ul> <p><i>'Helping Beekeepers Keep Bees'</i></p>	<p><b>Bulletin - Fire near hives</b></p> 
5 *	6 *	7 *	8
<p><b>Bulletin - Fire near hives</b></p>  <p><i>'Helping Beekeepers Keep Bees'</i></p>	<p><b>The Honey Flow</b></p> 	<p><b>The Honey Flow</b></p> <ul style="list-style-type: none"> <li>What is still flowering?</li> <li>Is nectar still coming into the hive?</li> <li>When to harvest?</li> </ul> <p><i>'Helping Beekeepers Keep Bees'</i></p>	<p><b>The Honey Flow</b></p> <ul style="list-style-type: none"> <li>What is still flowering?</li> <li>Clover (in some areas)</li> <li>Lotus (trefoil)</li> <li>Towai (mature bush)</li> <li>What else have you seen?</li> </ul> <p><i>'Helping Beekeepers Keep Bees'</i></p>
9	10 *	11 *	12 *
<p><b>The Honey Flow</b></p> <ul style="list-style-type: none"> <li>Is nectar still coming into the hive?</li> </ul> 	<p><b>The Honey Flow</b></p> <ul style="list-style-type: none"> <li>When to harvest?</li> </ul>  <p><i>'Helping Beekeepers Keep Bees'</i></p>	<p><b>Prize Draw</b></p> 	<p><b>Nic Nac's Section</b></p> 
13 *	14 *	15	16

## Samples needed for non-mānuka monofloral honey research

The High-Value Nutrition National Science Challenge currently has a project looking at the unique characteristics of NZ monofloral honeys, with a focus on honeys from non-mānuka species such as rewarewa, rātā, kāmahī and many others. [Click here for more info.](#)

One of the key goals of the project is to measure the biochemical features of monofloral honey collected within a given location, to provide a better understanding of honey variants, and ultimately identify any molecular components within the native honeys that may be linked to potential health benefits in the future. This is because honey composition and characteristics can differ between regions of origin and the source of its nectar.

Researchers at Plant and Food Research and AgResearch are searching for small sub-samples (5-10 grams) of monofloral honey, along with information on the approximate geographical region that samples were collected.

If you have possible samples that might be suitable, or are interested in finding out more about this research project, please contact Karl Fraser at AgResearch ([karl.fraser@agresearch.co.nz](mailto:karl.fraser@agresearch.co.nz)) or John Van Klink at Plant and Food Research ([John.VanKlink@plantandfood.co.nz](mailto:John.VanKlink@plantandfood.co.nz)) for further details and we can arrange shipping.



**APICULTURE**  
NEW ZEALAND

### **Beekeeping in dry conditions**

With some parts of the country becoming very dry, it is important for beekeepers to manage fire risks when using smokers or burning AFB-contaminated hives.

Visit the ApiNZ [Beekeeping in Dry Conditions](#) webpage for Fire Safety tips from Fire and Emergency New Zealand (FENZ).

### **Gabrielle recovery is no 'one-year sprint'**

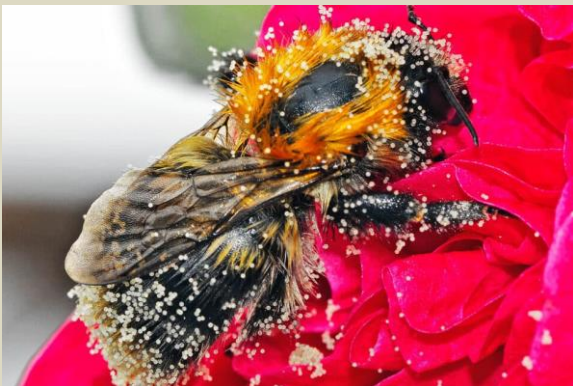
On one level Hawke's Bay and Tairāwhiti are back to normal one year after being devastated by Cyclone Gabrielle. The grass is growing, fruit and crops are ripening and a sense of normality was reinforced by the recent Hawke's Bay Fruit growers Association awards night earlier this month and the return of the Napier Port Primary Sector Awards in Hawke's Bay.

On another level it is obvious the region is still recovering.

There are still 1.2 million cubic metres silt to be removed in Hawke's Bay, 100 Wairoa homes are still uninhabitable and thousands of kilometres of fencing and tracks need to be repaired or replaced.

Farming and community leaders say the region has been changed forever.

Click on title to read more.



[Honey bees can handle the heat, but that still may not save them from climate change](#)

[Why honeybees don't overheat when loaded with nectar in rising temperatures](#)

### **New Zealand scientists developing laser to kill pests ravaging honeybee colonies**

It gives a whole new meaning to laser Kiwi as professors at Auckland University reveal they're experimenting with using lasers to disable and kill varroa mites in an effort to come up with cheap and effective protection for bee colonies.

Devising a cheap tool for beekeepers to protect bee colonies without using pesticides is the aim of scientists led by Dr Francesco Merola and Professor Cather Simpson at the University of Auckland's Photon Factory, in a collaborative project with New Zealand's Plant & Food Research.

Click on title to read more.

### **Beekeepers deliver stinging response to Apiculture NZ plan**

Apiculture NZ is aiming to double exports to \$1 billion by 2030 - but beekeepers are not impressed with the new strategy.

A new export levy, industry body and export standards are all part of a strategy to revive and develop the honey industry.

Click on title to read more.

### **Nine million years between NZ and Australian mānuka**

Honey producers are optimistic that the latest genetic findings that distinguish New Zealand mānuka from Australian will play well for future efforts to protect the honey variety.

A recent genetic study across 2000 DNA markers or "SNiPs" from New Zealand and Tasmanian plants identified what the researchers described as vast differences – so much so, they could potentially be classed as a different species.

Those differences were estimated to have evolved between nine million and 12 million years ago

Click on title to read more.

# Financial Statement

Whangarei Bee Club Incrporation

Opening Bank Balances as at 20 Jan 2024

Operating Account	45,383.44
Savings Account	416.46
<b>Total Funds</b>	<b>45,799.90</b>

**Plus Income From**

New Members	220.00
Renew Memberships	120.00
Book sales	45.00
Interest-01	1.58
	<u>386.58</u>
	46,186.48

**Less Expenditure**

Bank Fees	1.60
RWT -acct01	0.71
Club Day Expenses	176.46
Gift	180.00
Web Site - OnLine designs	50.60
Whareora Hall Hire	80.00
Xero - Monthly Sub	61.24
	<u>550.61</u>
	<u>45,635.87</u>

Total Balances as at 20 Feb 24

Operating Account	10,218.54
Savings Account	35,417.33
	<u>45,635.87</u>

# Other News and websites to check out

Locally developed swab test for bee disease set to go global

Kerry Paul's self-help book based on Manuka Health success

Mānuka: Strong genetic difference between NZ and Australian plants

Beekeeping is in Francis Proffit's blood

Ministers asked for new \$3m mānuka honey war chest

Greek Beekeepers Rally After Environmental Disasters Hit Honey Business

## Call for contributions

All you budding writers out there, we are looking for contributions to the monthly newsletter. It can be a one-off article or an ongoing piece. If you have something to add, then please email it to [wbccommunication@gmail.com](mailto:wbccommunication@gmail.com)



Thanks to all contributors of the Newsletter



Thanks to our sponsors for their support of the Honey Competition at Whangarei Bee Club:

Beequip

Golden Bay Cement

NZBeeswax

PGG

Farmlands

Mattersville

Ecrotek

