

Monthly Newsletter

Issue 207 May 2022

Upcoming Events and Notices

This Club Day: 7th May

Next Club Day: 4th June (AGM)

Whareora Hall 10.00am

What to bring:

- Your **Membership card** to show at the door
- **Cash** for the produce table, **produce** for the produce table
- **Library books** you have borrowed
- **Bee suit** (Club has some for members to use also)

Directions: From SH1, turn off to *Kensington*. Turn left onto *Mill Road*, then right at *Whareora Road*. Keep on this road until it joins *Pataua North Road* and carry on for a few more minutes.

The hall is on the right. Please **do not** park on the road, use the paddock adjacent to the Hall when the car park is full.

Guest Speaker for June:

Patrick of Apiarist Advocate is our guest speaker for June after the AGM.

[Apiarist's Advocate](#) [April Issue Here](#)

2022 AGM – June Club Day:

We have the Annual General Meeting coming up in June.

Agenda: Welcome; Apologies; Approval of last AGM minutes; Finance Report; Reviewer's Report; President's Report; Election of Officers; General Business.

Nominations/helpers needed – see article on page 4

May Club Day:

Talk from Nick Watkins on varroa treatment & a demonstration on how to make your own glycerine/oxalic acid pads to treat varroa.

There are no longer any mandates that apply to the club everyone is free to meet at the club day!

At the "orange" traffic light there are no limits to how many people can attend. You do not need to wear a face mask, but it is encouraged.

We will have pizzas for lunch.

May Club Day Duty Roster

Set Up Hall From 9am	
Set up in Kitchen 9am & Set up Lunch	
Wash up Kitchen from Lunch	
Pack up / Clean Hall From 12-30	

**VOLUNTEERS
NEEDED**

All these jobs are easy and require very little time and effort, please sign up on the roster at Club Day. A big "THANK YOU" for your help.

A reminder that WBC has a Facebook page open to all members. If you click on this [LINK](#), you will need to put in your membership number and we will approve your request. A great forum to ask questions and see what is going on in other people's hives.

News from last Club Day

Nick Watkins gave a talk on Nosema, what it is and how to prevent it. He also talked to us about feeding hives.

Below are his slides that he shared with us. Thanks, once again Nick for an informative session.

Nosema / Nosemosis

- ⚡ Nosema / Nosemosis – What is it?
- ⚡ How to Identify? Signs & Symptoms
- ⚡ How it is spread?
- ⚡ Where is it?
- ⚡ How to prevent/ manage?

'Helping Beekeepers Keep Bees'

1

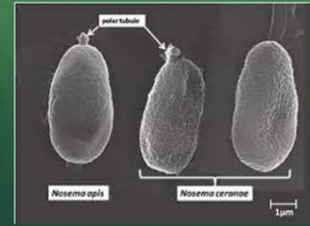
Nosema – What is it?

- ⚡ NZ has two types of Nosema
- ⚡ Nosema Apis & Nosema Ceranae
- ⚡ Nosema is a disease caused by a single-cell, fungal parasite. They are varieties of sporozoan/ microsporidian (they are spread through microscopic spores). Highly contagious.
- ⚡ The Nosema multiplies in the bees mid-gut inhibiting the absorption of nutrients.

'Helping Beekeepers Keep Bees'

2

Nosema



3

Nosema – How to identify? Signs & symptoms

- ⚡ Nosema is hard to identify! Compared with other diseases. Some signs maybe seen are:
 - ⚡ Faecal matter spotted on comb, floor & around the entrance. (Signs of dysentery)
 - ⚡ Bees crawling outside the hive from weakness
 - ⚡ General failure of the hive with plenty of bees still present
 - ⚡ Poor laying pattern of the queen (the queen can be infected!)
- ⚡ These symptoms are only seen with a heavy infection of the hive.

'Helping Beekeepers Keep Bees'

4

Nosema



5

Nosema – How it is spread?

- ⚡ Nosema is typically spread by:
 - ⚡ Bees visiting flowers or water sources infected bees have visited
 - ⚡ Drift or robbing bees that are infected
 - ⚡ Beekeepers using contaminated hiveware or equipment
- ⚡ Just a few spores can cause a devastating infection in the hive.

'Helping Beekeepers Keep Bees'

6

Nosema



7

Nosema – Where is it?

- ⚡ Nosema apis found in all hives
 - It is believed to have been brought here when honey bees were first introduced to NZ
- ⚡ Nosema ceranae has now been found in 60% of North Island hives
 - N. ceranae was first identified in NZ in 2010
- ⚡ Nosema most prevalent in spring (and late winter for Northland)
- ⚡ Nosema doesn't directly cause dysentery
 - Dysentery spreads Nosema
 - Nosemosis causes gut issues which in turn due to the poor health of the bee can cause dysentery

'Helping Beekeepers Keep Bees'

8

Nosema – How to prevent? (How to manage?)

- ⚡ Ensure the hive is healthy pre winter:
 - ⚡ Good food stores (Feed the hive!)
 - ⚡ Plenty of bees
 - ⚡ Good laying queen (may need to re-queen)
 - ⚡ Positioned in warm, sunny and dry location
 - ⚡ Old comb removed (3-5 year frame rotation)
- Note: harder to identify older com on plastic frame

'Helping Beekeepers Keep Bees'

9

Prevent/ manage cont.

- ⚡ Improve beekeeper hygiene
 - Clean and disinfect gear/ tools between hives/ apiaries (also good practise to prevent AFB spread)
- ⚡ Reduce or block vents – depending on environment
- ⚡ Alternatively you may need to have a vented/ partially vented floor to reduce dampness
- ⚡ Additives to feed & pollen supplements
 - Additives with good amino acids assist in keeping the bee gut healthy. Also promotes good gut health in growing bees (larvae and pupae). Some additives have been know to better the hygiene of the cells they are stored in.

'Helping Beekeepers Keep Bees'

10

Nosema Summary

- ⚡ Nosema is everywhere
- ⚡ Prevention is key
- ⚡ Healthy hives prevent infection
- ⚡ Keep hives warm, dry and well fed!
- ⚡ Have a good hygiene plan/ system

'Helping Beekeepers Keep Bees'

11

News from last Club Day

Slides on feeding

Feeding – A closer look

- Why do we need to feed?
- What options to feed?
- When and how much?
- Additives and supplements
- Feeders

'Helping Beekeepers Keep Bees'

1

Feeding – Why?

- Survival – Bees need food to survive
 - When the hive does not have enough stores (Double brood will require 30kg between main-flows. Singles 16kg – 20kg)
 - Lack of resources in the area
- Stimulation – increasing brood production
 - Increasing the brood and bee numbers for pollination or targeted honey crops

'Helping Beekeepers Keep Bees'

2

Feeding - Options

- Sugar syrup
 - 1:2 (water/sugar by weight) ratio for stores/maintenance feed
 - 1:1 (water/sugar by weight) ratio for stimulation
- Dry sugar
- Honey
 - Feed honey in frames
 - Extracted honey (caution!)

'Helping Beekeepers Keep Bees'

3

Feeding- Syrup 1:2 (67brix)

- Syrup 1:2 is 1 part water to 2 parts sugar (you will need to apply heat to dissolve sugar if home made)
 - This is suitable feed for winter stores
 - Should be feed early to mid autumn while there are plenty of bees to store and ripen
 - Use white sugar or fructose, avoid others

'Helping Beekeepers Keep Bees'

4

Feeding 1:1 (50brix)

- Syrup 1:1 is 1 part water to 1 parts sugar (applying heat will speed up the process)
 - This is mainly for stimulation (increasing brood production), you must have stores in the hive before stimulating
 - Commonly feed in early spring (sometimes late winter) to break dormancy, an continued through to the honey flow.
 - Also used to continue brood production once the honey flow has ended (late summer/early autumn)
 - Use white sugar or fructose, avoid others

5

Feeding – Dry sugar

- Dry sugar is easy to use
- It is taken up slower and does not stimulate bees
- Good maintenance option
- Not good for hungry/starving hives

6

Feeding - Honey

Caution!!!
Whenever feeding honey back to the hives personally ensure it has no AFB!

7

Feeding – Frames of Honey

- Excellent source of feed – best if it is from the same hive to prevent spread of disease
- Best to use fully capped honey – easily stored and ripened
- Storage – Best if you can freeze to kill wax moth and then store in cool dry location (free of pests)
 - If stored in freezer, let the honey come to ambient temperature before putting in the hive
- It doesn't cost extra

8

Feeding – Extracted honey Not recommended

- Not a recommended practise
- Honey may contain AFB
- If you do choose to feed extracted honey get it AFB tested
- The aroma of feeding honey excites robbing more than syrup

9

Feeding – When & how much?

- Feeding amount and frequency will vary depending on time of year, strength of hive, weather, nectar sources in the area and amount of brood.
- Double brood will require 30kg between main-flows. Singles brood 16kg – 20kg but not all at once

10

Feeding – When & how much? Autumn

- Autumn feeding should start earlier than later so there is plenty of bees to ripen and store feed (before mid May)
- If feeding syrup too early you may stimulate unwanted brood production
- 4 to 8 litres of 1:2 for a strong colony is a good feed.
- You may need to feed as often as every two weeks to build up stores for winter.
- Check your hives weight often. Be familiar with the weight of a hive with stores and a hive that is light on feed.

11

Feeding – When & how much? Spring

- If feeding syrup to stimulate you can start as early as the daylight hours increasing, however ensure there is sufficient stores
- 4 litres for a strong colony can be taken up overnight
- A frame of honey (or 4.5 litres of 1:1) can be consumed by the bees in less than a week if there is no other nectar sources
- Once you start stimulating the hive you need to continue feeding until the honey flow.
- Check your hives weight often. Be familiar with the weight of a hive with stores and a hive that is light on feed.

12

Feeding - Feeders

- Frame Feeders – Single, double & triple
 - Easy access for bees
- Top feeders
 - Hold large amounts of feed
 - Don't need to open hive
- Mason jar feeders
 - Home made small scale
- Entrance feeders
 - Don't need to open hive
 - Very susceptible to robbing

Feeding – Additives & Supplements

- Syrup additives
 - Hive Alive
 - Vitahive Brood booster
 - Kobee
 - Agrisaa
 - Plus more
- Pollen Supplements (Substitute pollen) – Powder & patties
 - Home made
 - Mega Bee
 - Vitahive

AFB checks

Trevor Clifton is available for AFB checks; he does charge for this service.

Email: puwurahoney@gmail.com

Ph: 4329511 or 0274330155

News from last Club Day (continued)

'**Nic Nac Section**' - use talcum powder gently when amalgamating two hives e.g. putting two weak hives together to get through winter (remove one of the queens). The dust disrupts the pheromones within the hives and stops disagreements.

'**Member talk time**' - This included a discussion on (1) control of wasps (use of Vespex and -Hawkeye and Dust to Dust (from Farmlands). You can attach Hawkeye to the side of the hive. It is a good option for winter wasp control. (2) Doing an AFB check noted that 2 queens had moved hive. (3) How to avoid dampness in hives over the winter. It is a more important issue than winter hive temperature up here in Northland.

AGM Nominations and Helpers Needed

- Nick Watkins has been nominated for President
- We do need nominations for Vice-President.
- We are also needing more committee members for WBC and for NPH. We are looking to disburse the responsibilities, so they are not a burden on any one person.
- It does not matter what your level of beekeeping expertise, we just need members willing to help to continue the club.
- If you want to help or contribute without being on the committee, please email wbccommunication@gmail.com
- Below is a list of all the current tasks and who is doing them, we really need helpers to take some of these jobs

The committee currently consists of:

Nick Watkins, Vince Lane, Heather Rye, Paul Martin, Sarah & Pieter Kalis, Mike Poyner, Suzie Scourfield, Leslie Pocklington & Rodney Heron

WBC - Current task holder

President: need nomination (Nick Watkins nominated for AGM)

VP: need nomination

Secretary: Vincent Lane

Treasurer: Heather Rye (bookkeeping now to be outsourced)

Sales Table: Jars, books, varroa treatment etc – Suzie Scourfield

Membership Person: Heather Rye

Newsletter: Suzie Scourfield

Meet & greet: Heather Rye

Website management: Paul Martin

Website membership for new members: Sarah Kalis

ApiNZ contact person: Paul Martin

Lunch Co-Ordination: Heather Rye

Audio & video setup: Mike Poyner

Kitchen Laundry: Ceilia Watkins

Social media person: Ceilia Watkins

Hive management: Nick Watkins

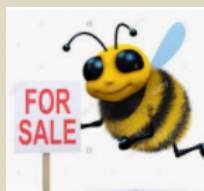
- We need some helpers to take on some of these jobs. Are you a whizz with websites and can take on management of our website? Do you love chatting to people on club day and want to look after the sales table? Let us know on club day or email:

wbccommunication@gmail.com



Bayvarol for sale

The club has some Bayvarol strips for sale. Ask at the sales table on club day. Stop your bees looking like this:



Sites for Beehives

John Craig (Tahi, previous guest speaker) is downsizing his number of hives and so will have several sites available for other beekeepers. The sites are at

- Ophiwa Road (a good honey site for up to 6 hives immediately adjacent to a large DOC reserve) owner Joseph 021 9777706
- Tiger Mountain Road (fenced site that has consistently produced good honey and is best with 4 – 6 hives), owner Ngaire 027 4250249
- Whareora Road that takes 6-8 hives and is very productive, owner John 09 4377034

All the owners are happy to have hives on the land and would like a honey reward. Anyone interested, contact the landowners.

Hives for Sale.

Stuart Hamilton has 45 hives for sale (\$350 – \$400/hive).
Ph: 021 488 770
stuijhamilton@xtra.co.nz

Wax wanted.

David wants to buy 20 to 60 kg wax at 10.00 per Kg or below.
Ph: 022 4755155

Farmlands Card

Just a reminder that Whangarei Bee Club is a shareholder at Farmlands, so all members get the shareholder discount on all their products - not just bee related items. You will need to show your WBC membership card and quote our Farmlands Account Number: 610123531

They currently stock 400mL square jars and lids

A request for citrus honey

Max is searching for ~10kg of citrus honey, preferably from the Northland area. He does not need it to be monofloral but would like a noticeable citrus character to it. Do you have some to sell?
email: max.scase@gmail.com Ph: 02102402174

5 acres of farmland is available to a keen beekeeper to locate their hives on. We are bee enthusiasts but live in Hamilton so distance is why we can't maintain our own. The section is between 3580 and 3570 Mangakahia Road, Pakotai. Its easy access through a gate on the Mangakahia road into a large paddock. Terms of use: we'll come to an arrangement that's good for both of us.



Sharon Hodder 022 624 9919 shazhodder@gmail.com



APICULTURE
NEW ZEALAND



Delegates can register [here](#):



Invasive wasp, the lesser banded hornet, found in Auckland for first time

A new invasive species of wasp has been found in St Marys Bay, central Auckland.

An information flier given to St Marys Bay residents this week by Biosecurity New Zealand said the non-native pest wasp had not been seen in Aotearoa, until now.

“Biosecurity New Zealand is interested in any further sightings of this insect as we would like to be sure there are no others in the area.”

Much larger than other wasp species, the lesser banded hornet grows up to 3cm long.



AFB PMP Management Board Vacancy

The Management Agency Board is seeking to appoint one new Board member to work with the Board to champion the elimination of AFB and provide governance oversight, ensuring delivery of value to beekeepers.

For further information and reference please refer to the relevant AFB PMP Governance Policy # [AFB/22/0/11-012](#).

To obtain a copy of the job description, contact Clifton King by e-mail: manager@afb.org.nz

Applicants will be required to submit a CV along with a minimum of three references to manager@afb.org.nz or to PO Box 44282, Lower Hutt, 5040.

Applications close 5.00 pm on 6 May 2022

2022 Annual Disease Return, Levy Invoice and Colony Return are available on HiveHub.

2022 Annual Disease Return forms became available on HiveHub from Friday 1 April.

You can [login here](#) and click on the **Submit ADR** button on your HiveHub Home page to submit your Annual Disease Return.

The due date for your Annual Disease Return is 1 June 2022.

The AFB PMP Consultation Process

You can find more information on [the consultation process on the website here](#).

Keep up to date with the AFB PMP Consultation: To ensure information is available on several digital platforms, we have created a Facebook Page for the purpose of keeping beekeepers up to date with the consultation rounds and feedback.

You can find the Facebook page here: [The Management Agency: National American Foulbrood Pest Management Plan](#)

We encourage all beekeepers to have your say - and we look forward to engaging with you again over the coming months. Your ideas and feedback will help to form the changes we propose.

Beekeepers to swarm to Christchurch for Apiculture NZ Conference

Beekeepers, honey producers and others from across the apiculture industry will gather at Christchurch's new convention centre on Thursday 30 June and Friday 1 July for the 2022 Apiculture New Zealand Conference and Trade Exhibition.

Financial Statement

Whangarei Bee Club Incorporation

Opening Bank Balances as at 20 March 22

Operating Account	32,583.22
Savings Account	404.99
Total Funds	<u>32,988.21</u>

Plus Income From

New Members	
Club Day Sales	
Renew Membership	
	<u> -</u>
	<u>32,988.21</u>

Less Expenditure

Bank Fees	1.60
Web Site - OnLine designs	42.55
Whareora Hall Hire	
Club Day Exps -Pizzas	178.79
	<u>222.94</u>
	<u>32,765.27</u>

Total Balances as at 20 March 22

Operating Account	32,360.28
Savings Account	404.99
	<u>32,765.27</u>

Other News and websites to check out

Honey in space - YouTube This is what honey does in zero gravity

Buzz off! New breed of honeybee developed to resist its greatest parasite by ejecting infested larvae from its colonies

How do bees make honey? From the hive to the pot

'I dream of bees': one boy's encounter with a swarm in Sicily led to a lifetime's devotion

Bee creative: A different kind of thrill in the adventure capital

The World's Largest Bee and the Cautionary Tale of Its Rediscovery

Beekeeping Starter Kits

Where would we be without bees?

These stingless bees make medicinal honey. Some call it a 'miracle liquid.'

Call for contributions

All you budding writers out there, we are looking for contributions to the monthly newsletter. It can be a one-off article or an ongoing piece. If you have something to add, then please email it to wbccommunication@gmail.com



Thanks to all contributors of the Newsletter



Thanks to our sponsors for their support of the Honey Competition at Whangarei Bee Club:

[Beequip](#)

[Golden Bay Cement](#)

[Farmlands](#)

[PGG](#)

Beequip^{NZ}TM
For innovative bee products

