



**"HELPING BEEKEEPERS KEEP BEES"**

Monthly Newsletter

Issue:

## Upcoming Events and Notices

**This Club Day: 4<sup>th</sup> November  
December**

**Next Club Day: 2<sup>nd</sup>**

### Whareora Hall 10.00am

What to bring:

- Your **Membership card** to show at the door
- **Cash** for the produce table, **produce** for the produce table
- **Library books** you have borrowed
- **Bee suit** (Club has some for members to use also)

Directions: From SH1, turn off to *Kensington*. Turn left onto *Mill Road*, then right at *Whareora Road*. Keep on this road until it joins *Pataua North Road* and continue for a few more minutes.

The hall is on the right. Please **do not** park on the road, use the paddock adjacent to the Hall when the car park is full.

### Bee at Club Day to WIN!!

Each Club Day we will be holding a prize draw for members to enter. The prize will be an empty hive consisting of:

Hive base, full depth box with 10 frames, hive mat and lid.

Rules: To enter, you **MUST** be present at club day.

We are also selling to members hive kitsets (no lids) for \$50 or box with 10 frames \$30

### Club Day Duty Roster

Set Up Hall From 9am	David & Sharron
Set up in Kitchen 9am & Set up Lunch	Sue & Lorna
Wash up Kitchen from Lunch	Emma Karin
Pack up / Clean Hall From 12-30	Andrew Steiner

All these jobs are easy and require very little time and effort, please sign up on the roster at Club Day. A big "THANK YOU" for your help.

# News from last Club Day



## Club Day – 7<sup>th</sup> October 2023

- Swarm Control reminder
- Bit of the Basics
- Smokers – Fuel, Lighting & Safety
- Smoker Demonstration
- Nic Nac's Section
- Members talk
- LUNCH
- Hive Time & Split?
- Note: ~~Helping beekeepers keep bees~~

1



## Swarm control reminder



2

## Supers & Swarm control

- Have supers ready!
  - Hives can quickly build up beyond the size of their current box/boxes
  - Nicks rule of thumb when hive builds up over 80% of current space – add a super
  - Swarm control – Swarm season will sneak up on you.
  - Do regular checks (10 to 14 days) for hive strength and swarm cells.
- 'Helping Beekeepers Keep Bees'*

3

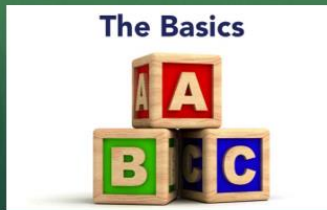


## Treasurer

- Morgan has stepped up to be our temporary Treasurer!
- Thank you Morgan!
- We are seeking someone to full the role, please think about putting your name forward.

*'Helping Beekeepers Keep Bees'*

## Bit of the Basics



## Bit of the basics

- Hive components
- Bees and their roles
- Bee products

*'Helping Beekeepers Keep Bees'*

## Hive Components

- Floor/Base Board/ Bottom Board - Vented and Non-Vented
- Brood Box
- Frames
- Excluder
- Honey Supers
- Feeder
- Hive Mat
- Lid

*'Helping Beekeepers Keep Bees'*

## Hive Components

- Floor/Base Board/ Bottom Board - Vented and Non-Vented



*'Helping Beekeepers Keep Bees'*

## Hive Components

- Brood Box



*'Helping Beekeepers Keep Bees'*

## Hive Components

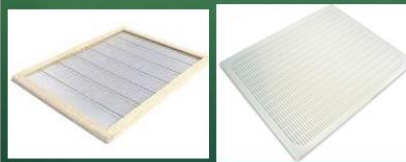
- Frames



*'Helping Beekeepers Keep Bees'*

## Hive Components

- Excluder



*'Helping Beekeepers Keep Bees'*

## Hive Components

- Honey Supers



*'Helping Beekeepers Keep Bees'*

10



11



12



## Hive Components

### Feeder



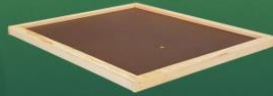
'Helping Beekeepers Keep Bees'

13



## Hive Components

### Hive Mat/Crown Board



'Helping Beekeepers Keep Bees'

14



## Hive Components

### Lid/Roof



'Helping Beekeepers Keep Bees'

15



## Bees and their Roles

### Roles of Bees in a Hive



16

## Bees and their roles

### Worker Bee (Female)

### Queen (Female)

### Drones (Male)

'Helping Beekeepers Keep Bees'

17



## Worker Bee



'Helping Beekeepers Keep Bees'

18



## Worker Bee

- Layed egg to hatching as a Worker bee is 21 days.
- The Worker is developed from a fertilised egg thus making her a female
- The worker has a diverse range of jobs throughout her lifespan

'Helping Beekeepers Keep Bees'

19



## Worker Bee Roles

- Day 1 - 2: Cell cleaning and preparation
- Day 3 - 12: Nursing - feeding the larvae royal jelly and bee food.
  - Day 6 - 12 Advance Nursing of queen is included
- Day 7 - 18: Wax production

'Helping Beekeepers Keep Bees'

20



## Worker Bee Roles cont.

- Day 14 onward: Foraging for nectar, pollen and propolis
- Other Jobs: - Fanning
  - Water carrier
  - Mortuary Bee
  - Guard Bees
  - Pollen packing & Propolizing

'Helping Beekeepers Keep Bees'

21



22



## Queen Bee

- Layed egg to hatching as a Virgin Queen bee is 16 days.
- The Queen is developed from a fertilised egg thus making her a female
- The queen needs to mate with Drones to become a viable queen

'Helping Beekeepers Keep Bees'

23



## Queen Bee Role

- A virgin queen will seek out other virgins to battle to the death
- Virgins will go on mating flights from day 4 from emerging up to 6 weeks (as ideal conditions are required)
- The queen will mate with 12 to 16 Drones (storing up to 6 million sperm)

'Helping Beekeepers Keep Bees'

24



## Honey

- Honey is made from nectar from plants
- It has a water content of around 18%
- Honey can be made from multiple sources of nectar (multifloral) or more difficult is to get the forage from a single source (monofloral) such as manuka, clover, rewarewa, etc
- Honey sugars are fructose and glucose giving it its sweetness

*'Helping Beekeepers Keep Bees'*

31



## Beeswax

- Beeswax is produced from the glands on the side of the bees body
- It takes about 7 to 15 kg of honey to produce 1 kg of wax
- It has many uses such as a polish, waterproofing, use in cosmetics and of course candles!

*'Helping Beekeepers Keep Bees'*

32



## Pollen

- Pollen is collected from plants
- Pollen is the bees source of protein, the building blocks for making the bees.
- Pollen also contains many essential fatty acids, vitamins and minerals
- Pollen catchers are used to harvest pollen from the hives

*'Helping Beekeepers Keep Bees'*

33



## Propolis

- Propolis is a mixture of bee saliva, beeswax and tree or plant resins/sap
- Propolis is used in the healthcare and cosmetic industry
- It has also been used as an additive to varnishes (especially sting instruments)

*'Helping Beekeepers Keep Bees'*

34



## Royal Jelly

- Royal Jelly is made from the glands of nursing bees using honey and pollen
- Royal Jelly is perishable (unlike honey) and must be refrigerated or frozen.
- It is used as a dietary supplement and alternative medicine

*'Helping Beekeepers Keep Bees'*

35



## Smokers - Fuel, Lighting & Safety



*'Helping Beekeepers Keep Bees'*

36



## Queen Bee Role

- The queen in the peak of build-up will lay around 1500 eggs a day
- The queen can select weather to fertilise an egg with sperm or not
- The queen is responsible for producing the queen mandibular pheromone or queen substance

*'Helping Beekeepers Keep Bees'*

25



## Drones (male)



*'Helping Beekeepers Keep Bees'*

26



## Drones (male)

- Layed egg to hatching as a Drone bee is 24 days.
- The Drone is developed from an unfertilised egg. (Haplod)
- Drones are feed by the workers
- Drones have a free access to other hives for food and shelter during the warmer months

*'Helping Beekeepers Keep Bees'*

27



## Drones (male)

- Drones are rejected (kicked out) from the colonies in winter.
- Drones can only mate once then die shortly after
- Drones hang out in congregation areas awaiting virgin queens
- Its estimated that only 1 in 1000 drones successfully mate with a queen

*'Helping Beekeepers Keep Bees'*

28



## Bee Products



*'Helping Beekeepers Keep Bees'*

29



## Bee Products

- Honey
- Beeswax
- Pollen
- Propolis
- Royal Jelly

*'Helping Beekeepers Keep Bees'*

30

## Smokers - Fuel

- Fuel:
- Pine Needles
- Hessian sacking
- Egg cartons
- Totara bark
- Wood shavings

*'Helping Beekeepers Keep Bees'*

## Smokers - Lighting

- Tools for lighting:
- Matches
- Lighter
- Torch
- Practice
- Patience

*'Helping Beekeepers Keep Bees'*

## Smokers - Safety

- Smokers get hot!
- Smokers can cause fires!  
(If fact they contain them)
- Extinguisher
- Bucket of water
- Leather or heat resistant gloves

*'Helping Beekeepers Keep Bees'*

### WDC Animals Bylaw 2017

WDC is now providing a link to our website on their animal Bylaw page.

They have updated their website with a link to ours, if you would like to check it out at [Keeping animals - Whangarei District Council \(wdc.govt.nz\)](#) under the section "Keeping bees in urban areas"

### **AFB Recognition Course and Refresher**

Our Club President, Nick Watkins will be running an AFB Recognition Course and refresher on the 11th of November at Barge Park Showgrounds.

Please follow this [link](#) to register

Any questions contact Nick on 02102981621

### Researchers abuzz over mānuka honey differences

Zapping honey into a vapour to break down its molecular structure seems to support the argument that New Zealand's mānuka honey is much different from its neighbour across the Tasman, writes Tim Cronshaw.

A scientific study could fan the embers of a smouldering New Zealand versus Australia debate for the right to use the mānuka honey name.

Honey producers lost their latest battle in May against Aussie beekeepers to trademark mānuka after a ruling by the Intellectual Property Office of New Zealand.

But the debate continues to roll on, Kiwi producers arguing honey from nectar found in the mānuka species, *Leptospermum scoparium*, in New Zealand is very different from honey from the nectar of the diverse species of *Leptospermum* in Australia.

### **Bee Club Treasurer Needed**

Natasha has regrettably decided to stand down in her position as Treasurer. So we are looking for a club member to take on this role. Morgan is a hero and is willing become a **temporary** Treasurer until we can find someone for the role.

Please think about putting your name forward at club day or email:

[wbccommunication@gmail.com](mailto:wbccommunication@gmail.com)



### **MATTERSVILLE LIVE BEE PRICELIST**

Overwintered Queens SOLD OUT \$74.75 (\$65+GST)

Spring Queens Available from November \$57.50 (\$50+GST)

Nucleus Colonies \$200 (\$173.92+GST)

Available from November (Enquire for Volume Discount)

Single Storey Hive \$375 (\$326.09+GST)

Floor/Base, Full Depth Box with 10 frames, Top Feeder, Hive Mat, Galv. Lid (Available from November)

Enquire for Volume Discount

We do have a wait list so book in soon.

Contact: Nick – 02102981621 or Ceilia - 02102627283

Email: [Mattersville@outlook.com](mailto:Mattersville@outlook.com)

### **FRAME CLEANING**

Tai's Frame Cleaning Service \$1.50 per frame.

For more info contact Tai Pullen 020 415 815 64

[taipullen9@gmail.com](mailto:taipullen9@gmail.com)

516 State Highway 1 Otaika Whangārei

### Video -Varroa Mites Are a Honeybee's 8-Legged Nightmare





**APICULTURE**  
NEW ZEALAND

### ApiNZ Conference 2023 videos online

Videos of the main speaking sessions from the 2023 Apiculture New Zealand Conference and Trade Exhibition held in Rotorua in June are available to view on the ApiNZ website [here](#).

### Honey bee pest and disease annual reports available

Biosecurity NZ's *Surveillance* publication is now available online. The latest issue has a number of annual reports including two of particular interest to the apiculture industry:

[American foulbrood annual report](#).

[Honey bee exotic pest and disease surveillance annual report](#)

### Surplus honey stored in sheds, warehouses around the country after production surged amid a 'gold rush'

New Zealand's high value honey market is looking to recalibrate after a "gold rush" boom when production surged to a record as producers struggled to keep up with demand, then plunged, with barrels of surplus honey now sitting in sheds and warehouses around the country.

### Beekeeping: how to handle honey bee pests and diseases

For any hobby or professional beekeeper there are a plethora of known pests and diseases that affect honey bees, including Varroa.

Fifty years ago there were few such pathogens, but today bees and bee products are shipped internationally on a large scale, which has enabled diseases to spread.

Dr Robert Owen has been a beekeeper for 20 years and did his PhD on the Varroa bee mite. [He talks with Kathryn Ryan](#).



### Beekeepers battling varroa mite count the cost of failed eradication and call for industry exit strategy

Search warrants have been issued as part of the federal government's investigation into the suspected illegal importation of live bees infected with varroa mite, as the industry works out what's next in learning to live with the deadly pest. Click on the title to read more.

### Bee expert Dr Cooper Schouten on the deadly parasite varroa mite

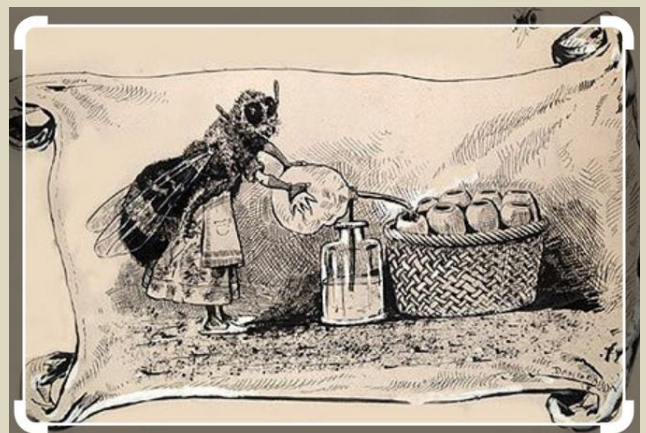
After 15 months Australia has abandoned its efforts to eradicate varroa mite, but what does a transition to management mean for the beekeeping industry?

Dr Cooper Schouten from Southern Cross University's Bees for Sustainable Livelihoods research group has spent years working with beekeepers in Fiji and Papua New Guinea to monitor and manage varroa mite.

He says that Australian beekeepers can expect their costs to increase as much as 30 per cent forcing thousands of hobby and semi-commercial operators out of the industry. Click on the title to hear his interview.

### Women behind the lens: the female beekeepers who hold 'the keys to a better world'

This group of women are the first female beekeepers in their town. Their work began in 2018 after they arrived at the Ximenes settlement, in the municipality of Barreiros in Pernambuco state in north-eastern Brazil. They had been displaced from their homes because of the expansion of the Suape port area farther north.



# Financial Statement

Whangarei Bee Club Incorporation

Opening Bank Balances as at 20 Sept 23

Operating Account	44,218.20
Savings Account	413.04
<b>Total Funds</b>	<b>44,631.24</b>

**Plus Income From**

New Members	685.00
Renew Memberships	110.00
Interest-01	1.53
	<u>796.53</u>
	<b>45,427.77</b>

**Less Expenditure**

Bank Fees	2.40
ASB - RWT - 01	0.69
Web Site - OnLine designs	50.60
Whareora Hall Hire	80.00
L Child - Club Day Pizzas	148.70
Xero - Monthly Sub	61.24
	<u>343.63</u>
	<b>45,084.14</b>

Total Balances as at 20 Oct 23

Operating Account	44,670.26
Savings Account	413.88
	<u>45,084.14</u>

## Call for contributions

All you budding writers out there, we are looking for contributions to the monthly newsletter. It can be a one-off article or an ongoing piece. If you have something to add, then please email it to [wbccommunication@gmail.com](mailto:wbccommunication@gmail.com)



# Other News and websites to check out

[Sustainable biocontrol's trial underway in food industry](#)

[Timaru-based honey producer acquires part of Ngai Tahu's Oha Honey](#)

[Backyard beekeepers stop producing honey as varroa mites, and the outbreak response, destroys hives \(Australia\)](#)

[Ngāi Tahu winds down troubled North Island Oha Honey business](#)

[Timaru-based honey producer acquires part of Ngai Tahu's Oha Honey](#)

[Taupo's Huka Honey Hive bee dub stung by vandals](#)

[Bees swarming in Auckland suburbia are completely 'natural', says beekeeper](#)

[Bees can now get their hives renovated — and it could save their lives](#)

[Beekeeping Today Podcast](#)

[The beekeepers riding out the storm](#)

[Viral warfare against a pathogen that devastates bee colonies has scientists abuzz](#)

[Honey Bee Facts](#)

Thanks to all contributors of the Newsletter



Thanks to our sponsors for their support of the Honey Competition at Whangarei Bee Club:

[Beequip](#)

[Golden Bay Cement](#)

[NZBeeswax](#)

[PGG](#)

[Farmlands](#)

[Mattersville](#)

[Ecrotek](#)

