

Upcoming Events and Notices

This Club Day: 2nd August

Next Club Day: 6th September

Whareora Hall 10.00am

What to bring:

- Your **Membership card** to show at the door
- **Cash** for the produce table, **produce** for the produce table
- **Library books** you have borrowed
- **Bee suit** (Club has some for members to use also)

Directions: From SH1, turn off to *Kensington*. Turn left onto *Mill Road*, then right at *Whareora Road*. Keep on this road until it joins *Pataua North Road* and continue for a few more minutes.

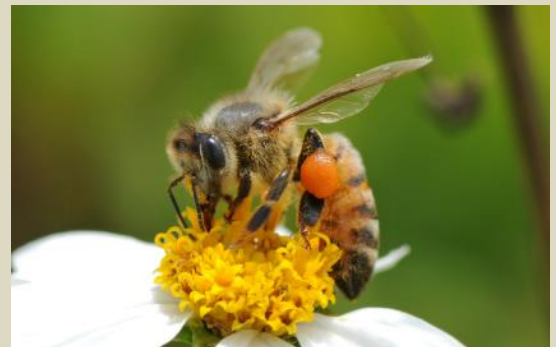
The hall is on the right. Please **do not** park on the road.

August Club Day

Preparing for Spring. What we can do in and out of the hive to help get ourselves and the bees ready for Spring



Jan van Kessel the Elder's 'Insects and a Sprig of Rosemary' (1653)
Oil on copper, actual dimensions: 11.5 x 14 cm (4 1/2 x 5 1/2 in.)



Club Day Duty Roster

Set Up Hall From 9am	Volunteers needed
Set up in Kitchen 9am & Set up Lunch	Lorna & Sue (if she is back)
Wash up Kitchen from Lunch	Volunteers needed
Pack up / Clean Hall From 12-30	Volunteers needed

All these jobs are easy and require very little time and effort, please sign up on the roster at Club Day. A big "THANK YOU" for your help.

News from last Club Day

July club day was "Club Movie Day", with bean bags, blankets and popcorn for members to enjoy! The Documentary "A Civilization 100 million Years Old" was shown. (click on title to find it on You Tube)



New to beekeeping?

Read the information on [this page](#) to find out what you need to know before becoming a beekeeper in New Zealand.



APICULTURE
NEW ZEALAND

After Devastating Winter Losses, Another Threat Looms for U.S. Beekeepers

Explore this gift article from The New York Times. You can read it for free without a subscription.

The parasitic *Tropilaelaps* mite, which threatens honeybees and the food supply, isn't in North America. Yet.

Apiculture surveillance programme

MPI's apiculture surveillance programme is searching for signs of exotic pests or diseases in bees. Find out what we are looking for, and what's at stake.



**NZ Bee Health
& Biosecurity™**

Overwintered 5-Frame Nucleus Colonies Whangarei Pickup

High-quality overwintered nucs available late August to early September. 6 available. These are the 6 best colonies selected from 13 based on vigour and gentle temperament — ideal for hobbyists and small-scale beekeepers.

Includes: 5 frames: brood, stores, and bees

Mated laying queen (marked); Supplied in coreflute nuc box (included in price)

Price: NZD \$225

Deposit: NZD \$100 to secure your order

Pickup: Whangarei, Northland

Remaining colonies will be requeened and available mid-October.

Contact Adrian A/H or text on 021 891 401



Re-establishment of the Honey Research Unit at Waikato University

The Honey Research Unit was originally founded by the late Dr Peter Molan whose groundbreaking work in the 1980s discovered mānuka honey's unique non-peroxide antibacterial activity. Now, under the direction of Dr Megan Grainger, the Honey Research Unit is building on this legacy to learn more about mānuka honey and the mānuka tree, as well as investigate properties of other native honeys and bee products. The unit also recognises the importance of research for the well-being of honeybees.

The unit aims to become a hub that fosters collaboration and builds meaningful connections between academia and industry nationally and worldwide.

The Honey Research Unit is now actively inviting researchers, supporters, and industry collaborators to help expand this work and share knowledge across disciplines.

How to get involved or learn more:

- Visit www.waikato.ac.nz/honeyresearch
- Contact honeyresearch@waikato.ac.nz
- Fill out the [Research Unit's contact form](#)
- Access the research database and sign up for updates: umf.org.nz/researchers

Financial Statement

Whangarei Bee Club Incorporation

Opening Bank Balances as at 21 May 2025

Operating Account	1,644.86
Savings Account	35,366.26
Total Funds	37,011.12

Plus Income From	
New Members	220.00
Hives & Bee equipt sales	-
Renew Memberships	4,045.00
Book sale	45.00
Interest-01	142.13
	<u>4,452.13</u>
	41,463.25

Less Expenditure

Bookkeeping costs	315.00
RWT -acct01	63.96
Club Day Expenses	361.78
Hive costs	62.20
Web Site - OnLine designs	101.20
events - promotion costs	486.50
Whareora Hall Hire	160.00
Printing Stationney	241.36
Travel	51.75
Xero - Monthly Sub	129.38
	<u>1,973.13</u>
	39,490.12

Total Balances as at 20 May 2025

Operating Account	4,045.69
Savings Account	35,444.43
	<u>39,490.12</u>

Other News and websites to check out

French law reintroducing banned pesticide sparks million-signature petition

Nāti Growth starts global launch of mānuka honey product line

How AI can help protect bees from varroa

Honey bees-ness tackled

Finalists announced for Hawke's Bay export awards Natural Health Products 2025 award winners

Beekeeper advocacy group ApiNZ comes under pressure

Blindsided Beekeepers See Red at AFB PMP Change

Honeybees-ness tackled

Organic honey: Couple's sweet success on the Coromandel Peninsula

Stoned bees abuzz on kōwhai, says apiarist who wants a tree cull

Me Today liquidates King Honey as industry sees post-glut contraction

Call for contributions

All you budding writers out there, we are looking for contributions to the monthly newsletter. It can be a one-off article or an ongoing piece. If you have something to add, then please email it to wbccommunication@gmail.com



Thanks to all contributors of the Newsletter



Thanks to our sponsors for their support of the Honey Competition at Whangarei Bee Club:

Beequip

Golden Bay Cement

NZBeeswax

PGG

Farmlands

Mattersville

Ecrotek

