

## Upcoming Events and Notices

This Club Day: No Club Day in June

Next Club Day: 6<sup>th</sup> July

### Whareora Hall 10.00am

What to bring:

- Your **Membership card** to show at the door
- **Cash** for the produce table, **produce** for the produce table
- **Library books** you have borrowed
- **Bee suit** (Club has some for members to use also)

Directions: From SH1, turn off to *Kensington*. Turn left onto *Mill Road*, then right at *Whareora Road*. Keep on this road until it joins *Pataua North Road* and continue for a few more minutes.

The hall is on the right. Please **do not** park on the road, use the paddock adjacent to the Hall when the car park is full.

### No June Club Day

Thank you to those who turned up to the May Club Day for our AGM. Unfortunately, we didn't have the required quorum (40 members). We had 26 attendees.

The committee decided that because of the public holiday associated with the June club day we will cancel that meeting and make the July club day our AGM. We will need a better turnout for that so please keep it in mind.

No June club day. See you all on July 6th.



### Apiarist's Advocate

### Apimondia newsletter

The latest Apimondia newsletter is available to read [here](#).

### FRAME CLEANING

Tai's Frame Cleaning Service \$1.50 per frame.  
For more info contact Tai Pullen 020 415 815 64  
[taipullen9@gmail.com](mailto:taipullen9@gmail.com)  
516 State Highway 1 Otaika Whangārei



**The Beekeepers Conference 2024**  
**Whanganui Racecourse 11<sup>th</sup> - 13<sup>th</sup> August 2024**

Presented by SNI Beekeeping Group Inc on behalf of the SNI  
Education Trust

**An Overseas Keynote Speaker will be attending  
to discuss varroa, treatments and breeding  
tolerant bees.**

**Programme:**

- **Sunday:** Hobbyist day – Varroa and treatment options.

Resistance is coming through misuse of treatments, so are you prepared to use organics?

- **Monday:** From 1 hive to 600 hives requiring no treatments.

- **Tuesday:** Where to from here? Can we do this?

**Accommodation:** (A guide is being prepared for those attending).

Motels and Hotels are nearby. On site at the Racecourse there is space for self-contained campervans and motorhomes, at no cost.

All beekeepers are welcome to attend. If you are not a member of either SNI, NZBees or ApiNZ, then join one of these groups and only pay \$100 per day (no GST).

Contact: [beecnfrence2024@gmail.com](mailto:beecnfrence2024@gmail.com) or the conference secretary Frank Lindsay [Lindsays.apiaries@gmail.com](mailto:Lindsays.apiaries@gmail.com)



APICULTURE NEW ZEALAND and the UNIQUE MĀNUKA HONEY FACTOR ASSOCIATION

**INDUSTRY SUMMIT DAY**  
**2024**



**Tuesday 18 June 2024 | The Pā, Waikato University, Hamilton**

**REGISTER HERE**



**APICULTURE**  
NEW ZEALAND

## A sour taste for beekeepers

Beekeepers are crumbling under the weight of diseased hives, depressed honey prices and a lack of industry investment in marketing and research.

The recently released 2023 New Zealand Colony Loss Survey, by Manaaki Whenua Landcare Research, has found beekeepers have the lowest well-being scores of any primary industry role.

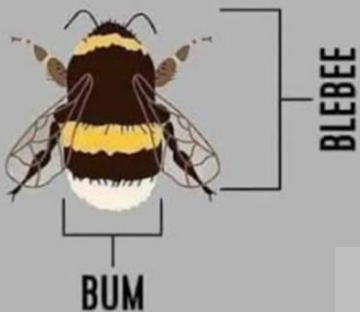
Listen to the interview [here](#)

## Honey bees brought to New Zealand

Mary Bumby, the sister of a Methodist missionary, was probably the person who introduced honey bees to New Zealand. She brought two hives ashore when she landed at Mangungu Mission Station in Hokianga in March 1839.

Read more [here](#)

## ANATOMY OF A BUMBLEBEE



## Honey Bee Research Symposium

The day before the ApiNZ Industry Summit, scientists will gather in Hamilton to present recent research in the field of apiculture. All are welcome to attend to hear some of the scientific challenges facing the industry, and understand how research in New Zealand addresses these issues.

**Monday 17 June, 9am - 5pm**

**Plant and Food Research Ruakura Campus, Hamilton**

Places are limited so [REGISTER HERE NOW](#)

## 2023 NZ Colony Loss Survey

Dear Whangarei Bee Club,

You are amongst the 3,457 beekeepers who completed the 2023 NZ Colony Loss Survey. Thank you for contributing to bee science!

Results have been available for the last few weeks. For example, they have been reported in the New Zealand Bee Keeper journal, The Apiarist's Advocate, and on RNZ. But I am also sharing the results directly in case you haven't seen them yet.

As you may know, over-winter losses increased every year between 2015 and 2022. Loss rates fell slightly from 13.5% over winter 2022 to 12.7% over winter 2023. On a national scale, this amounts to about 75,200 colonies lost over winter. As in past years, the main driver of losses was suspected varroa, which was responsible for about half of all over-winter losses.

For the first time, the surveys also recorded autumn losses. The overall loss rate over autumn 2023 was 16.8%. The 2023 survey also included wellbeing measures and losses attributed to Cyclone Gabrielle.

A [2-page summary infographic](#) of these and other findings is available.

The full report is available on the [Biosecurity New Zealand website](#). And all of the figures – including some not included in the report – are available on the [Manaaki Whenua Landcare Research website](#).

# Financial Statement

## Whangarei Bee Club Incorporation

Opening Bank Balances as at 20 March 2024

Operating Account	10,686.50
Savings Account	35,477.49
Total Funds	46,163.99

### Plus Income From

New Members	440.00
Hives & Bee equipt sales	30.00
Renew Memberships	-
Book sales	
Interest-01	135.59
	605.59
	46,769.58

### Less Expenditure

Bank Fees	2.40
RWT -acct01	61.02
Club Day Expenses	184.50
Bookkeeping Costs	67.50
Web Site - OnLine designs	50.60
Whareora Hall Hire	80.00
Xero - Monthly Sub	61.24
	507.26
	46,262.32

Total Balances as at 20 April 2024

Operating Account	10,710.26
Savings Account	35,552.06
	46,262.32

# Other News and websites to check out

Under threat of jail, beekeeper burns \$2m of bee boxes

NZ scientists hope to end AFB, a devastating bee disease

Man sentenced over illegal honey exports to Vietnam

Youthful beekeeper overcoming leukaemia and helping others

Whakamarama beekeepers say pollination is the backbone of their business

Agency aims to eliminate AFB from beehives

A sweet deal for farmers and a big win for NZ

Thousands of beehives lost to Cyclone Gabrielle keepers say

Alleged thief walked into a honey trap

Beekeeper invents his own massive crusher - Kea Kids News

Articles on Honeybees

## Call for contributions

All you budding writers out there, we are looking for contributions to the monthly newsletter. It can be a one-off article or an ongoing piece. If you have something to add, then please email it to [wbccommunication@gmail.com](mailto:wbccommunication@gmail.com)



**Thanks to all contributors of the Newsletter**



Thanks to our sponsors for their support of the Honey Competition at Whangarei Bee Club:

Beequip

Golden Bay Cement

NZBeeswax

PGG

Farmlands

Mattersville

Ecrotek

