

Upcoming Events and Notices

This Club Day: 1st March

Next Club Day: 5th April

Whareora Hall 10.00am

What to bring:

- Your **Membership card** to show at the door
- **Cash** for the produce table, **produce** for the produce table
- **Library books** you have borrowed
- **Bee suit** (Club has some for members to use also)

Directions: From SH1, turn off to *Kensington*. Turn left onto *Mill Road*, then right at *Whareora Road*. Keep on this road until it joins *Pataua North Road* and continue for a few more minutes.

The hall is on the right. Please **do not** park on the road.

March Club Day

Strong focus on hive time this meeting. The club has 5 hives now, all are due for a check. Will they need remedying or more space to grow?

Extraction Plant

The plant is likely to be closing on 20th March 2025 so please get your extractions booked asap.

Bulletin

Setup and cleaning roster for the hall – can you help?
Please nominate a day, just one day this year, where you can help. It all makes a difference!

Return your library books please! And remember to write in the book if you borrow any.

Vote on honey competition – April or May?

AGM in May

Club Day Duty Roster

Set Up Hall From 9am	
Set up in Kitchen 9am & Set up Lunch	Lorna & Sue
Wash up Kitchen from Lunch	
Pack up / Clean Hall From 12-30	

All these jobs are easy and require very little time and effort, please sign up on the roster at Club Day. A big "THANK YOU" for your help.



News from last Club Day

Club Day – 1st Feb 2025

Welcome back!

To our first meeting of 2025!



'Helping Beekeepers Keep Bees'

1

Club Day – 1st February 2025

- Welcome!
- Review of summer so far
- Interesting you tube videos
- Member talk time
- Nic Nac's Section
- Bulletin
- Lunch
- Hive Time – Let's spend some time today seeing how the girls have spent their summer!
- Note: Hand out roster for names – March club day

'Helping Beekeepers Keep Bees'

2

Review of summer...so far



'Helping Beekeepers Keep Bees'

3

Review of summer...so far

- Before you harvest
- Summer is the time to be checking your hives for – Requeening results
- Check for diseases before removing any honey or hive-ware
 - Check any stored comb for wax moth
 - Monitor varroa levels carefully
- Begin raising your Autumn queens (spring hatches)

'Helping Beekeepers Keep Bees'

4

Review of summer...so far

- After you harvest
- If you use chemical treatments, post honey harvest is a good time to treat. Always follow the instructions on the packet!
- Give your "wets" or extracted supers, back to the bees to clean – remember to try give them back to the same hive they came from or at least the same apiary.
- If you harvested your honey at home, you can't legally sell it.

'Helping Beekeepers Keep Bees'

5

Review of summer...so far

- What's still flowering in your area?
- Do you have Tutu, the plant, within 5kms of your bee site? – If you are unsure, it's never too late to go for a good walk around, and note all the plants around you.
- Honey Bees will travel up to 8kms if they're getting desperate for food during the dearth.

'Helping Beekeepers Keep Bees'

6

Tutu



'Helping Beekeepers Keep Bees'

7

Review of summer...so far

- Dearth is approaching!
- Dearth is the term for the time of year when the ground has dried up enough that flowers slow and eventually stop producing nectar.
- Beekeepers typically call this time, robbing season.
- Robbing behaviour begins as the bees natural food sources dry off but the hives are still at full summer capacity.
- There's already been some robbing behaviour seen around multiple apiaries in northland, have you noticed any yet?
- With all the rain the past week brought with it, hopefully the flowers will keep the nectar flow going a little bit longer!

'Helping Beekeepers Keep Bees'

8

A hive being robbed out by other bees



'Helping Beekeepers Keep Bees'

9

Bulletin

- Next Club day Saturday 1st March
- Strong focus on hive time this meeting
- Setup and cleaning roster for the hall – can you help? Please nominate a day, just one day this year, where you can help. It all makes a difference!
- Return your library books please! And remember to write in the book if you borrow any.
- Vote on honey competition – April or May?
 - AGM in May

'Helping Beekeepers Keep Bees'

10

Hive Time
(when lunch is packed away)

- New to Beekeeping – inside hall – Empty Hive – learn basics
- Bees! The club has 5 hives at the moment, all are due for a summer check. Will they need remedying or more space to grow??
- Please take care with hazards
- Wear protective clothing if you choose
- Veils available upon request
- We welcome children, but your children are your responsibility please

'Helping Beekeepers Keep Bees'

11

A honey season of two halves

Many Kiwi beekeepers are reporting a season of two distinct halves, as hot and cold spells across the motu impact production.

Beekeepers from many regions of New Zealand are reporting a season of two distinct halves, with native "bush" honey varieties boosting quantities, while several major mānuka production areas have failed, and clouds have also hung over key South Island white honey regions.



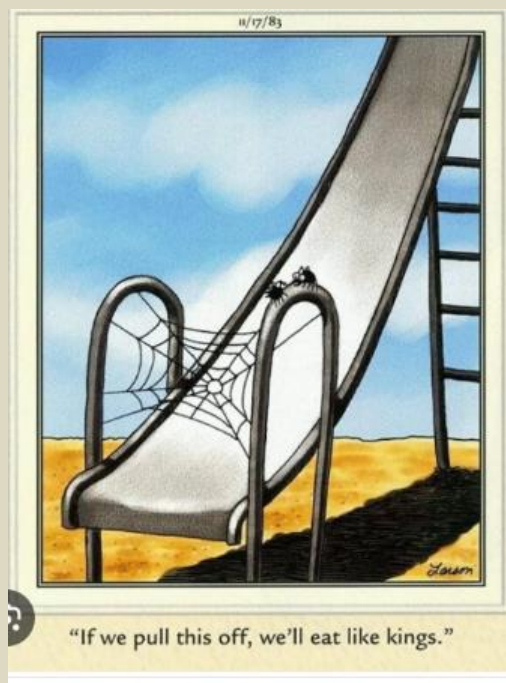
APICULTURE
NEW ZEALAND

Beekeepers seek chemical-free methods to kill deadly varroa mite

As the world's deadliest bee pest continues its slow spread across Australia, beekeepers are seeking out chemical-free treatments.

Beekeeper Jackie Morrison is looking for an alternative to miticide strips, a chemical treatment used in hives to kill varroa mite.

Click title to read article.



FRAME CLEANING

Tai's Frame Cleaning Service \$1.50 per frame.

For more info contact Tai Pullen

020 415 815 64

taipullen9@gmail.com

516 State Highway 1 Otaika Whangārei

Help us do SCIENCE to save bees!

The University of Canterbury Adaptable Phage Solutions project (previously the ABAtE project) is trying to find phages that can infect and kill the bacteria that causes American Foulbrood (AFB). Between 2018 and 2021 they discovered 26 phages capable of destroying NZ AFB. They are looking for beekeepers who are willing to give soil samples from around their hives. Samples from around healthy hives are best for finding bacteriophages that can kill *AFB* stains.

For any beekeepers who want to participate in sending in samples, place some soil from around your hive into a zip lock bag or other container. Label the bag with your contact details and, if possible, location/GPS coordinates from where the sample was collected.

If you want to send a soil sample for this research programme, bring it to Club Day and Vince will send it to them after March club Day.

LEARN TO TASTE HONEY LIKE A PRO

3-DAY LEVEL ONE INTRODUCTION TO THE SENSORY ANALYSIS OF HONEY

Wednesday 2nd-Friday 4th April 2025

CENTRAL AUCKLAND LOCATION

Specifically designed for NZ varietal honey, this 3-day immersive training will introduce you to the art and skill of sensory analysis. The curriculum will be consistent with the time-honoured and respected Italian National Register of Experts in the Sensory Analysis of Honey Experts and will inspire you to enter the diverse and exciting world of honey appreciation.

The course is primarily designed for beekeepers, packers, and honey technicians for quality assessment, but also offers invaluable insight for chefs, food writers, nutritionists, or passionate foodies.

The course content will include:

- the physiology and techniques of sensory analysis
- learning to memorise, record, express and share findings
- defects and solutions to mitigate those defects
- possible value-added products
- honey food matches and cooking with honey
- lots of opportunities to taste and record a diverse range of New Zealand honey.

This advanced apicultural education programme is to support excellence, quality, and innovation in the honey industry. It has been developed in collaboration with the ApiNZ Education and Skills Focus Group.

Training will be conducted by *Maureen Conquer*, *ApiNZ National Honey Competition Senior Judge* and *Apimondia NZ Representative*.

*You can almost smell it.
Honeys ready for tasting at
the honey sensory course.
Photo supplied.*



Financial Statement

Whangarei Bee Club Incorporation

Opening Bank Balances as at 21 January 2025

Operating Account	9,652.61
Savings Account	36,173.18
Total Funds	45,825.79

Plus Income From

New Members	110.00
Prepayment membership CB Smith	60.00
Hives & Bee equipt sales	120.00
Renew Memberships	60.00
Interest-01	99.85
	449.85
	46,275.64

Less Expenditure

Bank Fees	-
RWT -acct01	44.93
Club Day Expenses	174.24
Hives & equipt purchase	123.49
Web Site - OnLine designs	50.60
Whareora Hall Hire	80.00
Bookeeping	-
Xero - Monthly Sub	64.69
	537.95
	45,737.69

Total Balances as at 20 February 2025

Operating Account	9,509.59
Savings Account	36,228.10
	45,737.69

Other News and websites to check out.

Tasmania's artificial queen bee insemination program to futureproof industry

Turkey grapples with alarming rise of counterfeit honey production

The future of beekeeping IoT and AI-powered precision monitoring enhances hive health

14.6-million-year-old bee fossil found in New Zealand

Manuka companies take a hit

National survey launched to tackle varroa mite threat to honeybees - Australia

RNZ Rural News: Honey season update (from 1:45 to 3:10)

Gloriavale workers packed jars until their hands bled to meet illegal honey order

Carterton community buzzing ahead of What's the Buzz Fun Day

Bees don QR codes, unlock hive secrets

Call for contributions

All you budding writers out there, we are looking for contributions to the monthly newsletter. It can be a one-off article or an ongoing piece. If you have something to add, then please email it to wbccommunication@gmail.com



Thanks to all contributors of the Newsletter



Thanks to our sponsors for their support of the Honey Competition at Whangarei Bee Club:

Beequip

Golden Bay Cement

NZBeeswax

PGG

Farmlands

Mattersville

Ecrotek

