



"HELPING BEEKEEPERS KEEP BEES"

Monthly Newsletter

Issue: 235 November 2024

Upcoming Events and Notices

This Club Day: 2nd November

Next Club Day: 7th December

Whareora Hall 10.00am

What to bring:

- Your **Membership card** to show at the door
- **Cash** for the produce table, **produce** for the produce table
- **Library books** you have borrowed
- **Bee suit** (Club has some for members to use also)

Directions: From SH1, turn off to *Kensington*. Turn left onto *Mill Road*, then right at *Whareora Road*. Keep on this road until it joins *Pataua North Road* and continue for a few more minutes.

The hall is on the right. Please **do not** park on the road, use the paddock adjacent to the Hall when the car park is full.

November Club Day is Open Day!

Please promote the open day to everyone in your community – ALL WELCOME!

Would members please come from 8.30am to help set up.

Food vouchers are available for members to purchase food from the food truck, these will be issued at the door on presentation of your membership card.

Club Day Duty Roster

Set Up Hall From 9am	Sue & Lorna
Set up in Kitchen 9am & Set up Lunch	Help needed
Wash up Kitchen from Lunch	Help needed
Pack up / Clean Hall From 12-30	Help needed

All these jobs are easy and require very little time and effort, please sign up on the roster at Club Day. A big "THANK YOU" for your help.

JOIN US AT WHANGAREI BEE CLUB OPEN DAY!

SATURDAY
NOVEMBER 2ND
10AM - 2PM

ALL WELCOME

Whareora Hall
820 Whareora Road



Scan me!



Food and drink available

Kid friendly activities

Spot prizes

Honey tasting

Demonstrations

& more!



Able to sponsor or donate? contact us! wbccommunication@gmail.com



APICULTURE

NEW ZEALAND

Honey industry still in a sticky situation

As boom fades, Mānuka testing regimen has drastically cut earnings, leading beekeeper says.

The end of the Kiwi honey boom and changes to Mānuka honey testing have left the honey industry struggling and frustrated.

Beekeeper of 26 years Steve Wooton has seen the industry go through highs and lows and said the past four years have been the toughest.

New Zealand Mānuka Honey Day

4 November is New Zealand Mānuka Honey Day.

To honour this year's Mānuka Honey Day, the UMF Honey Association is launching the Mānuka Mastery Programme, a short, engaging video course designed for consumers and businesses alike to deepen their knowledge of this incredible health food. [Explore the course here](#). Read the [press release here](#) for more information.



Hive ware For Sale

The Club has full depth and $\frac{3}{4}$ depth boxes with plastic frames for members to purchase. Speak to one of the committee members if you are interested.

Hives For Sale

Mike Fox will have nucs available. If interested get in touch with Mike

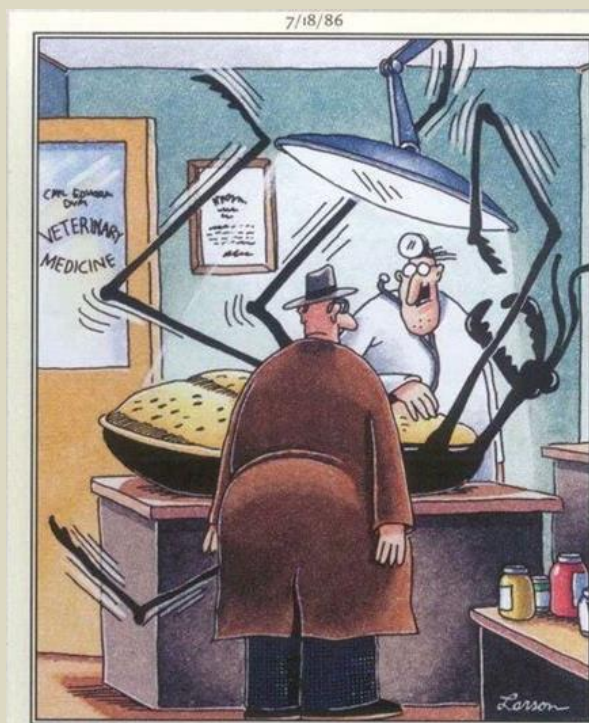
Ph: 0211651283

NZ scientists hope to end AFB, a devastating bee disease

Scientists are working on an innovative new method to limit the spread of American Foulbrood, a pathogen feared by New Zealand beekeepers.

The team at the University of Canterbury hope to use viruses called "phages" to kill the bacteria linked to the disease, which infects bee larvae.

If achieved, it would be a significant breakthrough. American Foulbrood, or AFB, has been in New Zealand for more than 100 years and is a big problem for our honey industry.



"I'm sorry, Mr. Caldwell, but the big guy's on his way out. If you want my opinion, take him home, find a quiet spot out in the yard, and squash him."

FRAME CLEANING

Tai's Frame Cleaning Service \$1.50 per frame. For more info contact Tai Pullen

020 415 815 64

taipullen9@gmail.com

516 State Highway 1 Otaika Whangārei

Financial Statement

Whangarei Bee Club Incorporation

Opening Bank Balances as at 20th September 2024

Operating Account	12,918.90
Savings Account	<u>35,920.81</u>
Total Funds	48,839.71

Plus Income From

New Members	330.00
Book sales	45.00
Hives & Bee equip sales	50.00
Renew Memberships	460.00
Gold membership	-
Interest-01	125.49
	<u>1,010.49</u>
	49,850.20

Less Expenditure

Bank Fees	2.40
RWT - acct01	56.47
Beehives- nucleus	600.00
Cleaning	138.00
Club Day Expenses	187.32
Deposit for Cheers hireage (tables etc)	100.00
Open day expenses	849.27
New Phone-Committee	384.03
Web Site - OnLine designs	50.60
Whareora Hall Hire	80.00
PO BOX annual fee	280.00
Xero - Monthly Sub	64.69
	<u>2,792.78</u>
	47,057.42

Total Balances as at 20 October 2024

Operating Account	11,067.59
Savings Account	<u>35,989.83</u>
	47,057.42

Other News and websites to check out

International retailers to get a taste of why NZ mānuka honey is so remarkable

Garden with aisles, shelves and checkout stocked with flowers to feed bees

Fighting antibiotic resistance

Sweet deal for honey exporters

Can Mushrooms Save the Bees? - Paul Stamets

Solutions Underfoot: How Paul Stamets is Using Mushrooms to Save the Bees

Bee biosecurity resources

8 Sweet Honey Bee Facts You Should Know

Pioneering robot system enables 24/7 monitoring of honeybee behavior

Call for contributions

All you budding writers out there, we are looking for contributions to the monthly newsletter. It can be a one-off article or an ongoing piece. If you have something to add, then please email it to wbccommunication@gmail.com



Thanks to all contributors of the Newsletter



Thanks to our sponsors for their support of the Honey Competition at Whangarei Bee Club:

Beequip

Golden Bay Cement

NZBeeswax

PGG

Farmlands

Mattersville

Ecrotek

