

Upcoming Events and Notices

This Club Day: 5th October

Next Club Day: 2nd November

Whareora Hall 10.00am

What to bring:

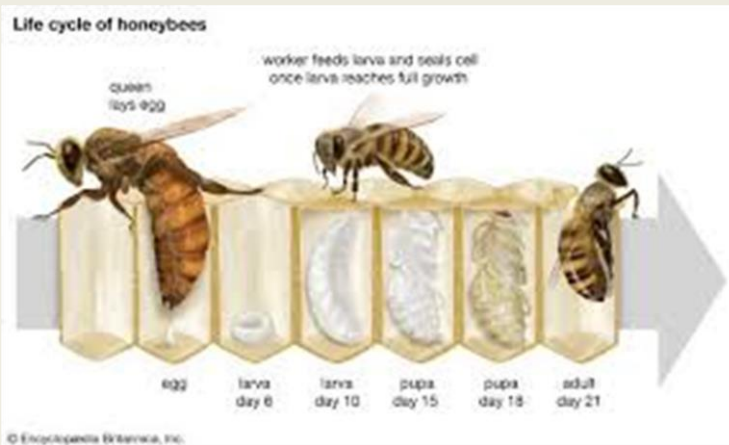
- Your **Membership card** to show at the door
- **Cash** for the produce table, **produce** for the produce table
- **Library books** you have borrowed
- **Bee suit** (Club has some for members to use also)

Directions: From SH1, turn off to *Kensington*. Turn left onto *Mill Road*, then right at *Whareora Road*. Keep on this road until it joins *Pataua North Road* and continue for a few more minutes.

The hall is on the right. Please **do not** park on the road, use the paddock adjacent to the Hall when the car park is full.

Club Day October

The life cycle of Apis Mellifera



The Beekeeper Spring 2024 [click here to download](#)
 Apiarist's Advocate Oct 2024 [Click here to download](#)



Whangarei Bee Club Open Day November 2nd

Remember – everyone is welcome so invite all your friends. See flier on page 3 of newsletter for more details.

Club Day Duty Roster

Set Up Hall From 9am	Club members
Set up in Kitchen 9am & Set up Lunch	Sue Young & Lorna Child
Wash up Kitchen from Lunch	Club members
Pack up / Clean Hall From 12-30	Club members

All these jobs are easy and require very little time and effort, please sign up on the roster at Club Day. A big "THANK YOU" for your help.

FRAME CLEANING

Tai's Frame Cleaning Service
 \$1.50 per frame. For more info
 contact Tai Pullen 020 415 815 64
taipullen9@gmail.com
 516 State Highway 1 Otaika
 Whangārei

News from last Club Day



Club Day – 7th September 2024

- Welcome!
- It's spring – so what now?
- Splits and swarms
- Interesting you tube videos
- Member talk time
- Nic Nac's Section
- Bulletin
- Lunch
- Hive Time – empty hive ware only
- Note: Hand out roster for names

'Helping Beekeepers Keep Bees'

1

★

It's finally spring!



'Helping Beekeepers Keep Bees'

2

It's spring – so what now?

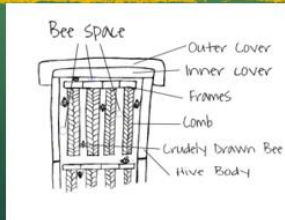
- The Bee space concept
- The bee space concept affects beekeepers every time hives are opened and frames are removed. The most interesting factor regarding the bee space is that if the gap is more than 9mm, bees will fill the area with beeswax, if it is less than 6mm, bees will glue the parts together with propolis. The bee space allows a passage for bees to move, provides ventilation in the hive, and allows for easier removal of frames. If your bee hive does not have enough honey supers on during a major honey flow the hive becomes jammed out with honey and burr comb built where ever possible. At this stage because of overcrowding with lack of bee space and nowhere for the queen to lay, the hive starts to prepare to swarm.

'Helping Beekeepers Keep Bees'

3

★

It's spring – so what now?



'Helping Beekeepers Keep Bees'

4

★

It's spring – so what now?

- Certificate Of Inspection due by 1/11/2024
- Spring mite strips in – what strips did you use last season? Remember to change them up!
- To feed or not to feed? 1:1 or 2:1 (water to syrup)
- What's flowering in your area?
- Are you wanting a honey harvest? Get your supers ready now
- Requeening – things to consider, how old is your queen? What's her laying pattern like? What's the temperament of the hive?

'Helping Beekeepers Keep Bees'

5

★

Splits and Swarms



'Helping Beekeepers Keep Bees'

6

Splits and swarms

- Different split methods – how do you split your hives?
- How and why to split your bee hive! Dr Mark Goodwin

'Helping Beekeepers Keep Bees'

7

★

Swarms – why do they do it?

- Swarming is a natural process of reproduction in bees resulting in the division of the original colony into two.
- It is when the old queen (usually) and a group of bees leave the parent colony and start a new colony somewhere else.
- Colonies swarm because the brood area is overcrowded for the size of the colony.
- Some hives even produce a number of after-swarms. The after swarms contain virgin queens and have a lower chance of survival.

'Helping Beekeepers Keep Bees'

8

Swarm prevention

- Many different ways to prevent swarming – all about giving the bees space.
- Beekeeping Demaree Method: How To Keep A Hive From Swarming

'Helping Beekeepers Keep Bees'

9

Demaree method



'Helping Beekeepers Keep Bees'

10

Member talk time

- Have a topic you'd like to discuss? Questions you want answered?
- Now's the time to raise your hand!

'Helping Beekeepers Keep Bees'

11

★

Nic Nac's Section



12

Bulletin

- Next club day 5th October
- Return your library books please!
- Now hiring – Extraction Plant Manager – do you know anyone? Speak to the committee.
- Bee club open day – what do we all want to see there? Please put suggestions in the box
- WBC Survey – Have you completed it yet? Please check your email or the newsletter for a link if you haven't.

'Helping Beekeepers Keep Bees'

13

Hive Time

(when lunch is packed away)

- New to Beekeeping – inside hall – Empty Hive – learn basics
- No Active Hives this month!
- Bees! The club will be getting bees again shortly, hive time will hopefully be back next club day.

'Helping Beekeepers Keep Bees'

14

Hives /Nucs for Sale:

Mike Fox has nucs for sale. Phone 0211651283 for details on cost.

Dave Pullen has full hives for sale. Phone: 0211077776 for details on cost.

JOIN US AT WHANGAREI BEE CLUB OPEN DAY!

SATURDAY
NOVEMBER 2ND
10AM - 2PM

ALL WELCOME

Whareora Hall
820 Whareora Road



Scan me!



Food and drink available

Kid friendly activities

Spot prizes

Honey tasting

Demonstrations

& more!



Able to sponsor or donate? contact us! wbccommunication@gmail.com



APICULTURE NEW ZEALAND

Think like a bee to tackle varroa, apiarists say

A [new research project](#) is giving beekeepers a platform for sharing their expertise to improve the health of the nation's beehives.

The varroa mite has been in New Zealand for 24 years, and the [destructive parasite](#) continues to kill beehives. It is the main reason colonies die in winter.

Project Varroa, an operational research project by Biosecurity New Zealand, got some of the country's best beekeepers together to discuss ways to tackle this relentless parasite.

Farmstrong launches new resources

Farmstrong is excited to announce the launch of its free *Getting Through* resources focussing on how primary industry workers impacted by the devastating cyclones and floods of 2023 managed and came out the other side.

The new *Getting Through* resources, which were created in partnership with Rural Support Trust, include a [book](#), [podcasts](#) as well as a website featuring videos and topic-related advice from experts. The website and videos will be launched around October, so keep a look out.

The resources feature stories from farmers and growers who got through the extreme weather events, as well as practical information and advice from experts.

Getting back on your feet after an extreme weather event takes time and involves months, if not years, of hard work and it's hoped the new resources will help people deal with future adverse weather events.

Beekeepers expecting to make a loss this season

Despite fewer hives around and an expected drop in honey production, it looks to be [another challenging season](#) for beekeepers.

With the new honey season getting underway, many are expecting to make a loss due to an ongoing glut of honey.

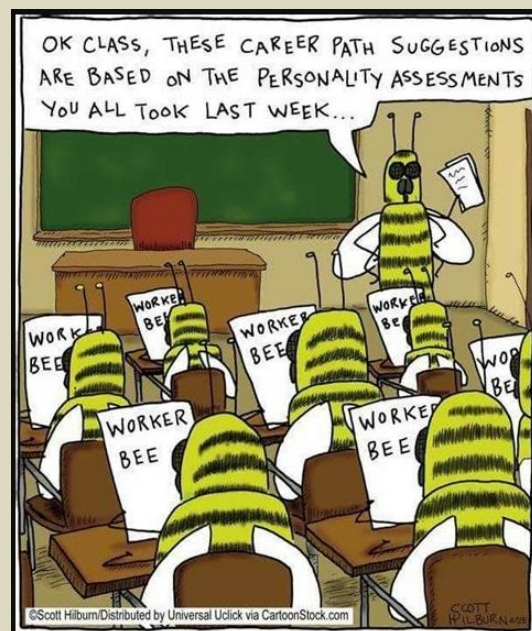
Barry Hantz of Hantz Honey in mid-Canterbury said it was a big concern.

"There's been oversupply probably for the last five years, especially of mānuka honey," he said. "There is a big stockpile out there."

Foulbrood still a 'gigantic issue'

Wairarapa beekeepers are pulling their weight in managing a highly infectious bacterial brood disease, but there is no room for complacency, a pest management veteran says.

Just over 270 cases of American foulbrood (AFB) were reported in the Manawatū-Whanganui region, which includes Wairarapa, to the body responsible for eliminating the disease in New Zealand's managed beehives in the 12 months to July 2023.



Thousands Of International Retailers to Get a Taste of Why NZ Mānuka Honey Is So Remarkable

A new digital series highlighting what makes New Zealand mānuka honey so special has launched to thousands of retailers and industry professionals across the world.

MPI - Bee biosecurity resources

Research reports, articles, and guidance on bee biosecurity and health. [Click here](#)

[Bee biosecurity: The essentials booklet](#)

[New Zealand bee biosecurity visual ID guide](#)

Fake Honey Is Everywhere, and These Tests Can Prove It

Is your jar of honey genuine? That cartoon bee charmingly included on its label may encourage you to think the golden substance inside was produced by such hard-working, six-legged pollinators, all happily secreting sugary deliciousness in the name of nature. But, in reality, that sweet amber could well be diluted with bee-free syrup.

According to the European Commission, just under half of commercial honey sold on the continent is fraudulent. [In a report published last year](#), the governing body found that, out of 320 products sourced from 20 countries, 147 (46%) contained suspicious adulterants such as syrup made from rice and wheat.

Financial Statement

Whangarei Bee Club Incorporation

Opening Bank Balances as at 20th August 2024

Operating Account	13,030.34
Savings Account	35,847.07
Total Funds	48,877.41

Plus Income From

New Members	
Hives & Bee equipt sales	
Renew Memberships	495.00
Gold membership	
Interest-01	134.07
	629.07
	49,506.48

Less Expenditure

Bank Fees	3.60
RWT - acct01	60.33
Club Day Expenses	163.50
Gifts Speakers etc	-
Bookeeping Costs	247.50
Web Site - OnLine designs	50.60
Whareora Hall Hire	80.00
Xero - Monthly Sub	61.24
	666.77
	48,839.71

Total Balances as at 20 September 2024

Operating Account	12,918.90
Savings Account	35,920.81
	48,839.71

Other News and websites to check out.

September's the time to bee aware of fuzzy food heroes

Wairarapa honey industry riding out downturn
Support our hardworking bees during Bee Aware Month

Auckland Beekeepers' Club Inc. Interesting articles

Honey runs in the genes for company at heart of farming success

What is the Best Manuka Honey?

Trials suggest mānuka honey benefits

Everyone wants to save the bees, but which ones?

Support our hard-working honey bees during Bee Aware Month

Hairy, masked and sweat: The unusual kinds of native Kiwi bees

Manuka honey shows 'very surprising' potential to reduce breast cancer tumor growth

Call for contributions

All you budding writers out there, we are looking for contributions to the monthly newsletter. It can be a one-off article or an ongoing piece. If you have something to add, then please email it to wbccommunication@gmail.com



Thanks to all contributors of the Newsletter



Thanks to our sponsors for their support of the Honey Competition at Whangarei Bee Club:

Beequip

Golden Bay Cement

NZBeeswax

PGG

Farmlands

Mattersville

Ecrotek

